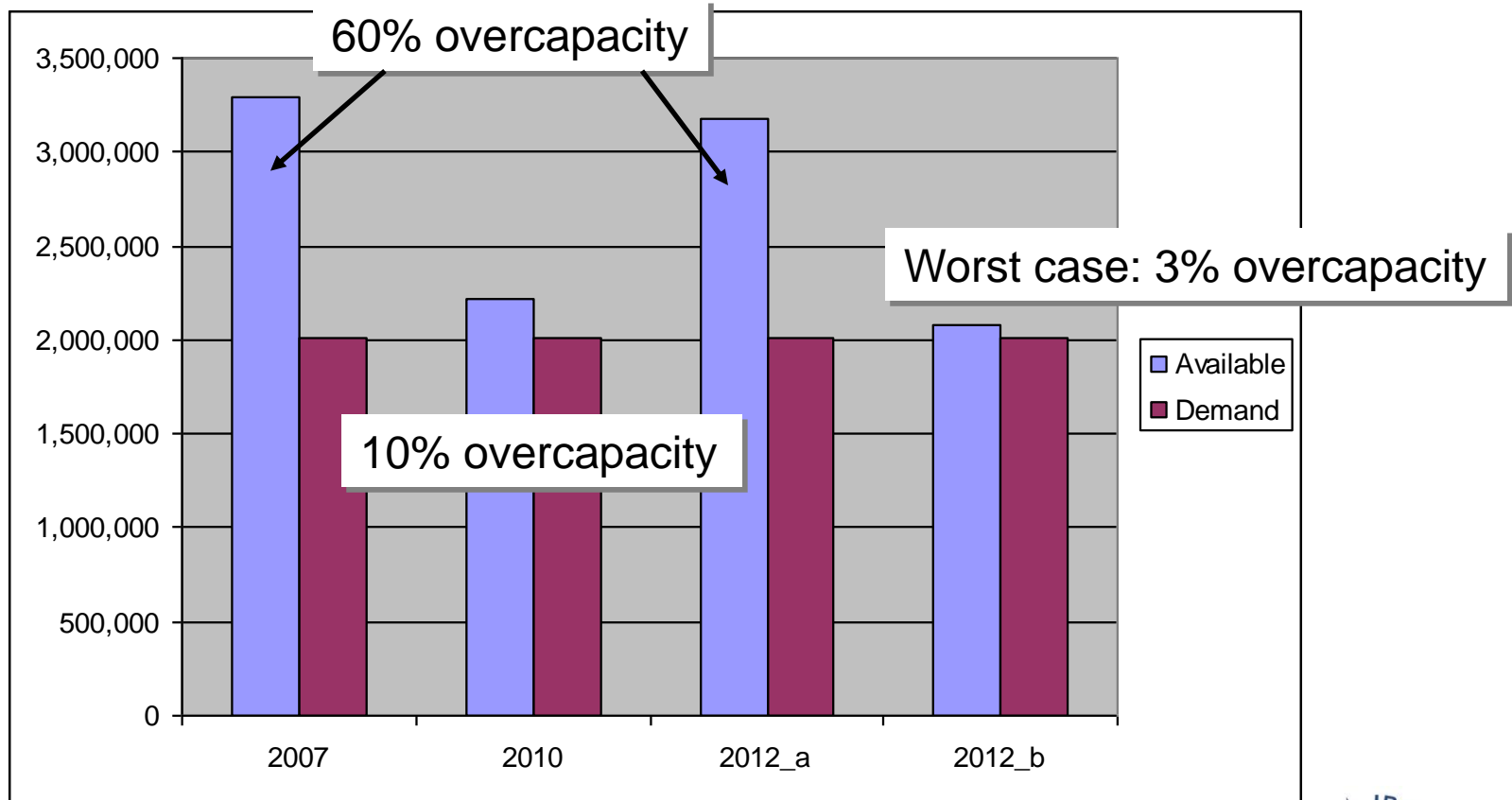


Confederation of European Waste-to-Energy Plants

Meeting Ireland's Landfill Diversion Targets

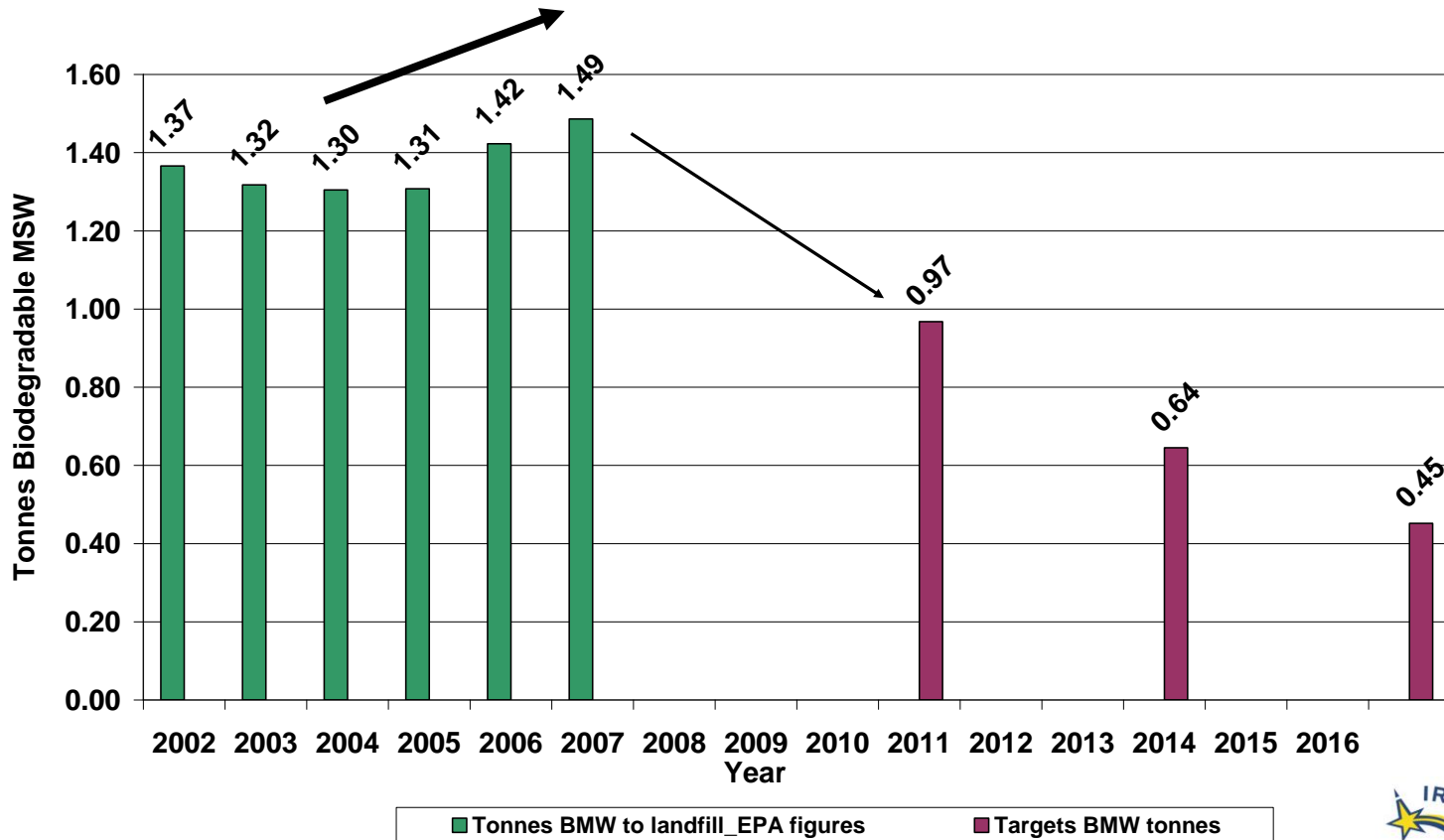


Landfill Capacity in Ireland



Current Position

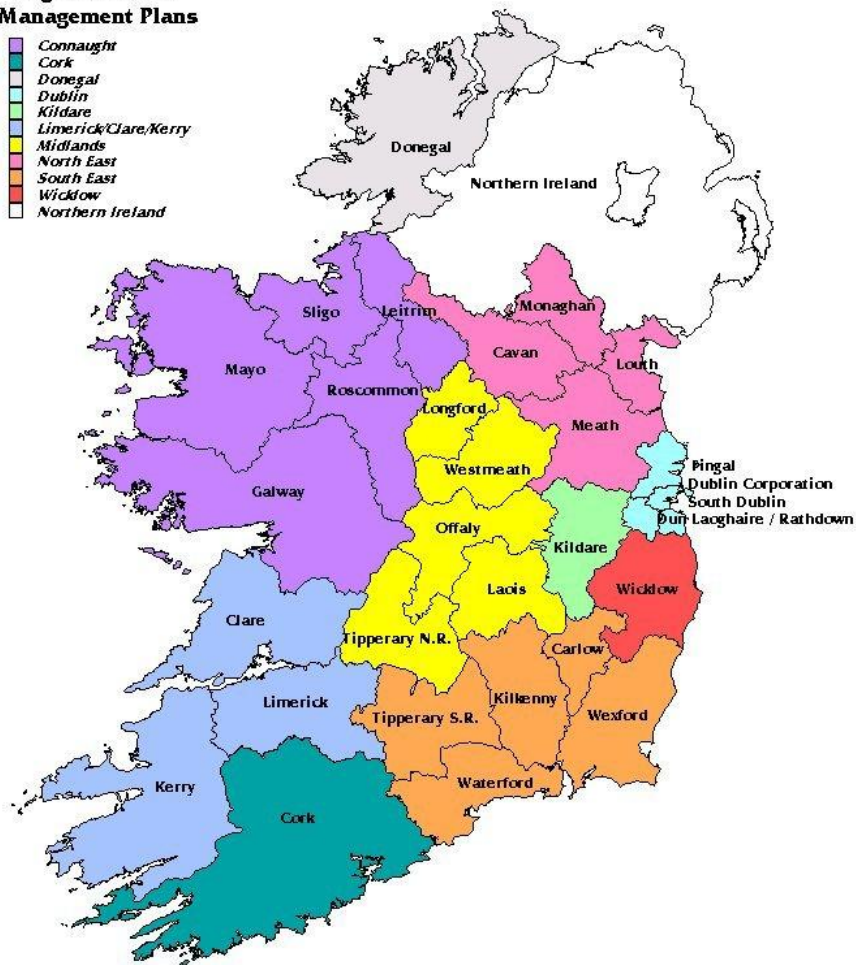
“Ireland continues to move further away from the target for 2010.”



How did this happen?

Regional Waste Management Plans

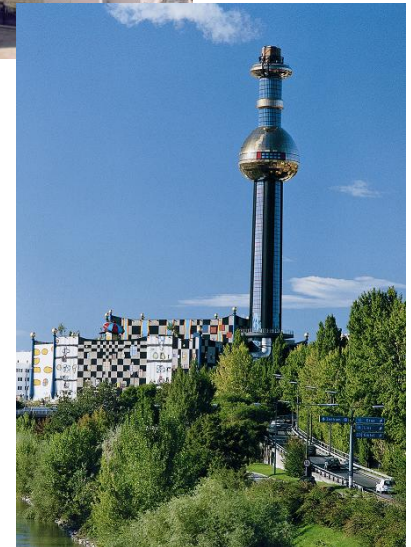
- Connaught
- Cork
- Donegal
- Dublin
- Kildare
- Limerick/Clare/Kerry
- Midlands
- North East
- South East
- Wicklow
- Northern Ireland



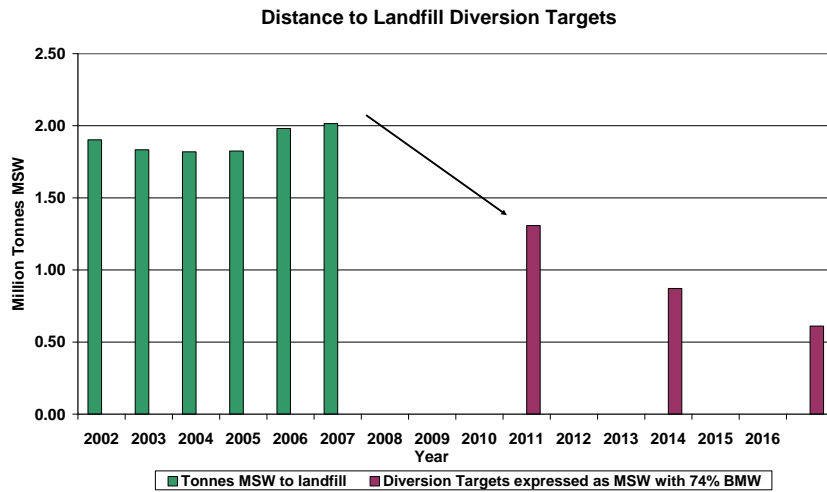
- 1999: Landfill Directive
- 1999 – 2000: First plans
- 2000: Running out of landfill
- 2000 – 2005: Overcompensate capacity
- 2005 - : Excess capacity

CEWEP Ireland

- Branch of CEWEP since 2005
- Promote development of WtE
- Highlight & monitor excess landfill
- Policy Recommendations
 - Landfill taxes
 - Landfill bans

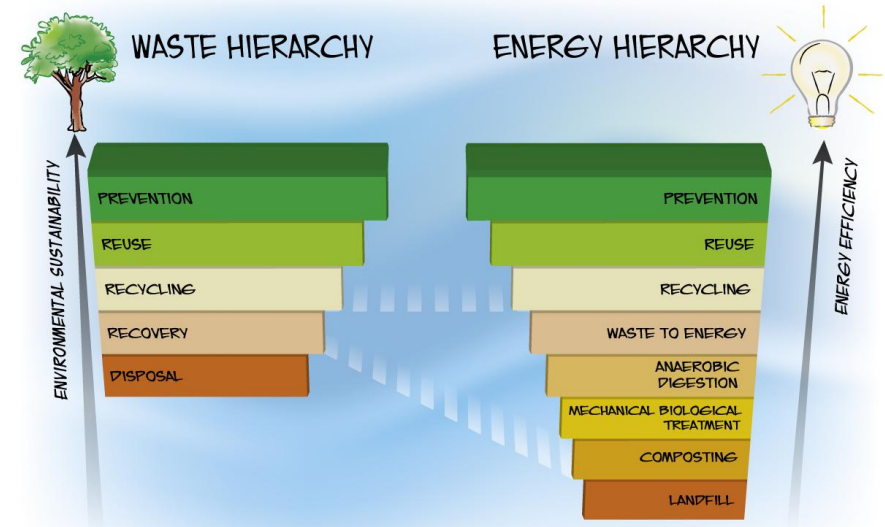


Need for alternatives



Landfill Directive Targets
Residual Waste capacity needed by 2010, 2013, 2016

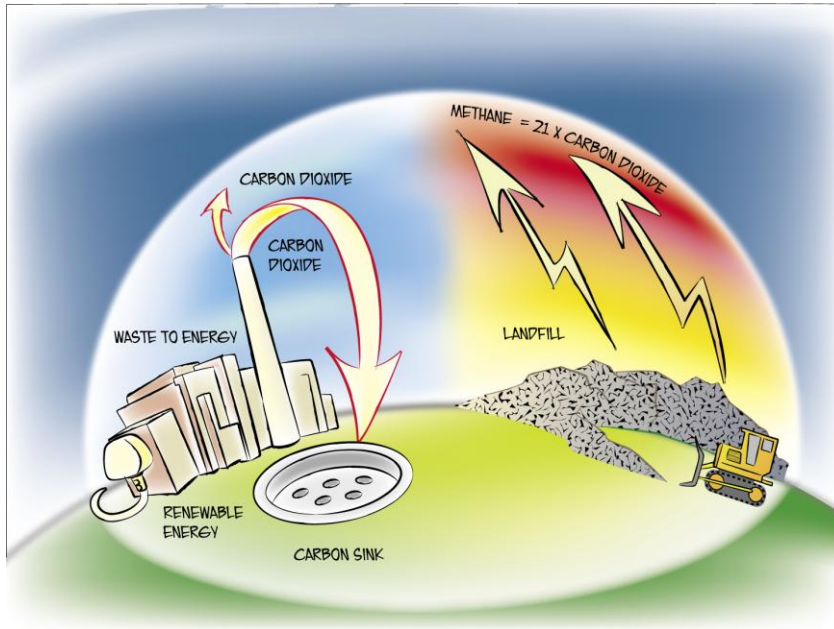
Resource Efficiency
Energy recovery > Disposal
rMSW or MBT residue



TAKING SUSTAINABLE USE OF RESOURCES FORWARD:
A THEMATIC STRATEGY ON THE PREVENTION & RECYCLING OF WASTE

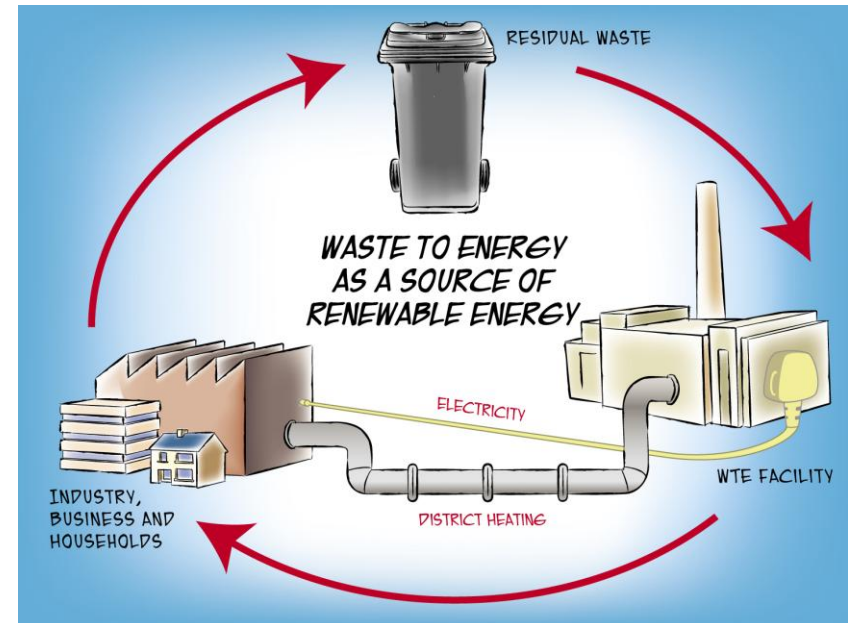
CLIMATE CHANGE 2007: MITIGATION ON CLIMATE CHANGE,
INTERGOVERNMENTAL PANEL ON CLIMATE CHANGE

Need for Alternatives



Renewable Energy targets,
Bioenergy Action Plan

Greenhouse Gas Reduction

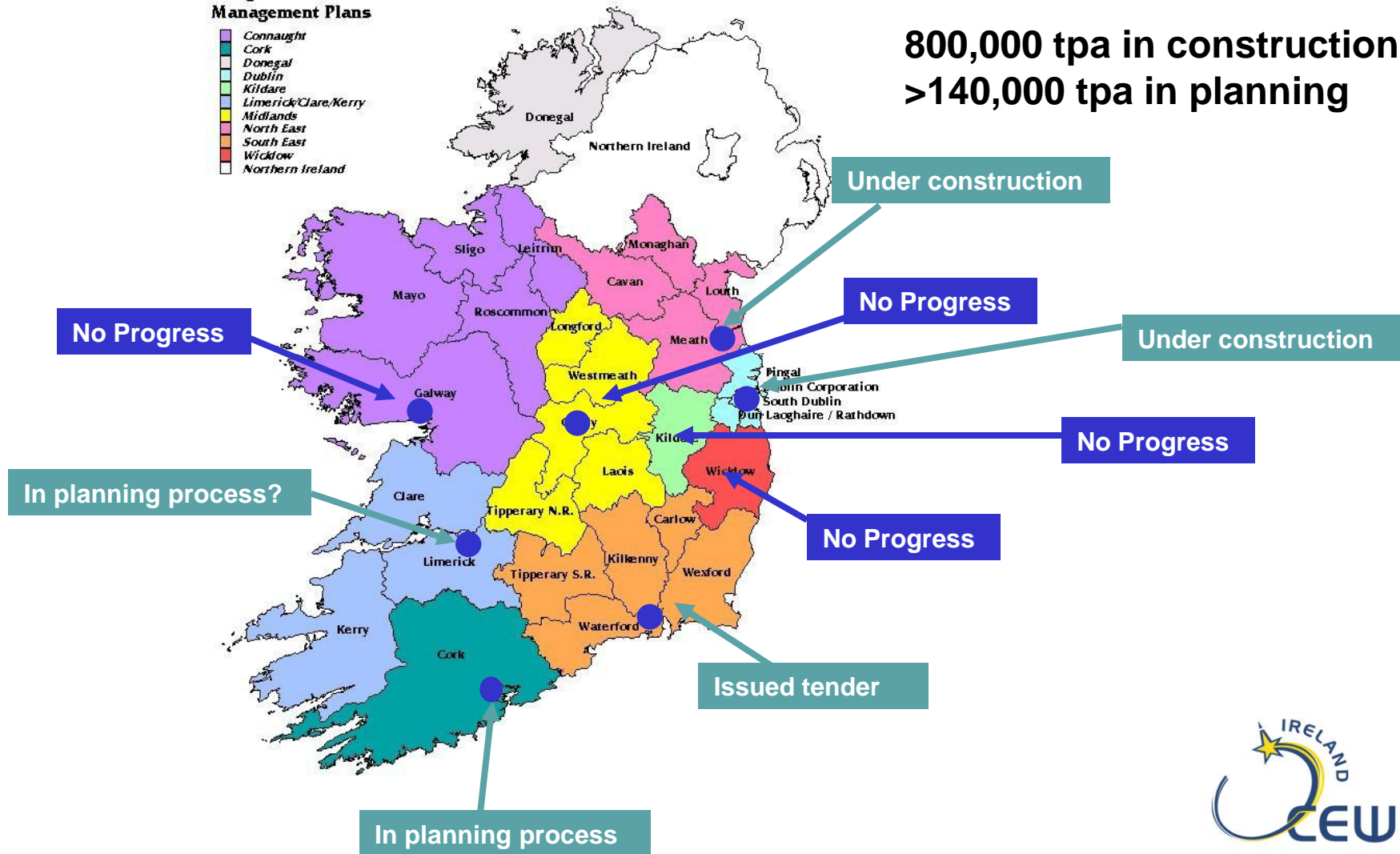


Development of alternatives: WtE

Regional Waste Management Plans

- Connaught
- Cork
- Donegal
- Dublin
- Kildare
- Limerick/Clare/Kerry
- Midlands
- North East
- South East
- Wicklow
- Northern Ireland

800,000 tpa in construction
>140,000 tpa in planning



Threats & Concerns

Landfill



Uncertainty

Hierarchy



Moves to encourage alternatives

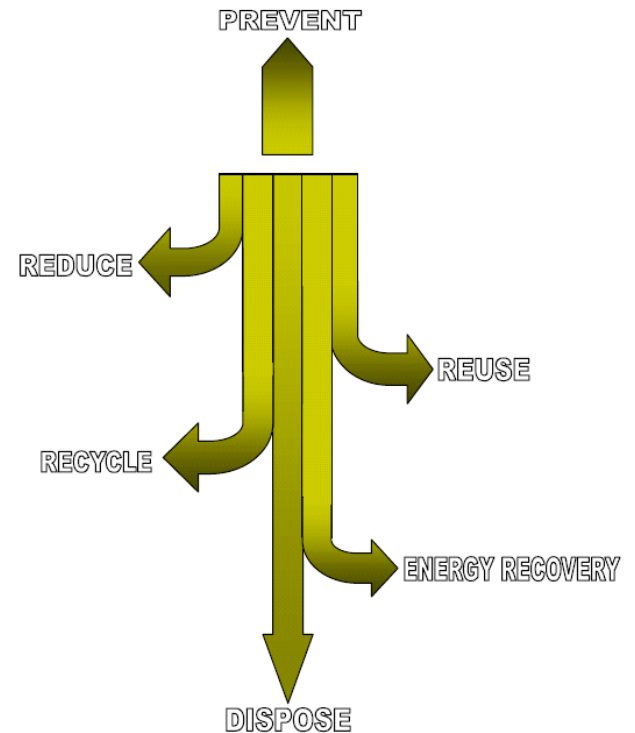
1. Landfill tax



2. Pre-treatment conditions

3. Greater policy certainty

4. Waste Framework Directive



Conclusions

- 1. Retain Landfill Directive**
- 2. Monitor & aid implementation**
.... and show it has teeth
- 3. Biowaste management**
- 4. WFD Hierarchy**

